



Looe Parish Economic Profile

30 September 2016

Economic Development and Culture

A	Summary	3
1.	Community profile	3
2.	Businesses [MSOA based]	3
3.	Economic activity	3
4.	Hours worked	4
5.	Employment	4
6.	Commuting	5
7.	Travel to work	5
8.	JSA claimants	6
9.	Qualifications	6
10.	Earnings [Parliamentary Constituency level]	7
B	Looe - geographies	8
11.	Looe	8
12.	SE Cornwall Parliamentary Constituency	13
C	Looe – data and analysis	14
13.	Community profile	14
14.	Businesses – workplaces/local units [MSOA based]	16
15.	Economic activity [Parish based]	18
16.	Hours worked [Parish based]	20
17.	Employment	21
18.	Employment – Business Register and Employment Survey	26
19.	Commuting	27
20.	Travel to work	29
21.	JSA claimants	33
22.	Qualifications	35
23.	Earnings	36
D	Notes and sources	38
24.	Maps -detailed	38
25.	Sources	40

A Summary

1. Community profile

Population

The population of Looe in 2011 was recorded at 5,112. Of these 2,989 were of working age (16-64). The proportion of working age at 58.5% was slightly below the Cornish average (61.5%), while there was a significantly higher proportion of those of pensionable age 28.0% to 21.7%.

Dwellings and household spaces

The 2011 census revealed a total of 3,016 dwellings and 3,021 household spaces in Looe. There was a higher percentage of household spaces with no usual residents in Looe than on average for Cornwall – 18.9% to 11.2%. There was a lower share of detached properties – 30.1% to 37.6%, a lower share of semi-detached 20.2% to 24.4%, and a similar share of terraced housing (19.5% to 22.8%). There was a higher percentage of flats 29.7% to 13.4%).

2. Businesses [MSOA based]

There were 350 businesses identified in Looe in 2015 – details are set out below. Main categories were 'Accommodation and food services' (26%), 'Wholesale, retail and motors' (24%), and 'Agriculture, forestry and fishing' (10%). Both 'Accommodation and food services' and 'Wholesale, retail & motors' were over-represented in relation to the Cornish average. 'Professional, scientific & technical' and 'Administrative and support services' were under-represented.

There have been some small changes in percentage shares of sectors between 2010 and 2015 in Looe. 'Wholesale, retail & motors' fell back from 27% to 24%, 'Agriculture, forestry & fishing' and 'Construction' both fell back by 1%, while 'Administrative & support services' increased by 2% from 1% to 3%.

3. Economic activity

Data from the 2011 census provides an insight into the economic status of the 16-74 age group. In 2011 there were 2,316 economically active and 1,380 economically inactive in the Parish. Looe had a lower percentage of economically active compared to the Cornish average – 62.7% to 66.7%, and an above average percentage of economically inactive – 37.3% to 33.3%.

Of the economically active, Looe had a similar percentage in employment to the Cornish average (91.1% to 90.9%), with higher levels of unemployment (6.2% to 4.9%). Looe also had a higher percentage of people who were self-employed (25.7% to 20.4%).

Of the economically inactive, Looe had a lower share of Full-time students (8.5% to 12.9%), and Long-term sick or disabled (11.8% to 13.1%); the same 'Looking after home or family' (12.0%), but with a higher share of Retired – 62.9% to 56.9%.

In relation to the unemployed, Looe had a lower share of those who were aged 25-49 – 40.6% to 47.2%.

4. Hours worked

Overall a slightly higher proportion of Looe residents worked part-time (35.3%) than on average for Cornwall (33.9%). Although a lower percentage worked full-time, there was a significantly higher percentage who worked for 49 or more hours per week – 16.1 to 13.8%.

5. Employment

Employment – residents [Parish based]

Data from the 2011 census gives a fuller picture of which sectors residents of Looe were employed in. The figures give total employment including employees and self-employed.

There were 2,165 residents in employment, the main sectors of employment were: 'Wholesale, retail and motors' (17.8%), and 'Accommodation & food services' (16.5 %). There was a slightly higher dependence on 'Wholesale, retail and motors' in the Parish than is common across Cornwall and a higher dependence on 'Accommodation & food services'.

Employment – workplace

The census shows the workforce by sector for each area for 2011. 1,783 people worked in Looe with the three main sectors being 'Accommodation and food services' (21.0%) 'Wholesale, retail and motors' (20.1%) and 'Health' (11.1%). The first two of these had higher shares than the average for Cornwall, particularly 'Accommodation & food services'.

Detailed analysis of workplace employment

Detailed analysis of employment in Looe is available from the Census at MSOA level. This gives a total of 1,208 in employment. 'Accommodation & food services' accounted for 25% of the total followed by 'Wholesale, retail & motors' at 22.6%.

Overall, the self-employed accounted for 38.4% of those employed. However, the share varied by sector being highest amongst those in 'Agriculture, forestry and fishing' at 93.3%, 'Construction' at 77.3%, and 'Information & communication' at 56.3%.

There were some differences in employment share according to status. Looking at employees, 'Accommodation & food services' accounted for the largest share with 29.2%, followed by 'Wholesale, retail & motors' with 25.4%. Amongst the self-employed; 'Construction' accounted for 22.2% of

the total followed by 'Accommodation & food services' with 18.2% and 'Wholesale, retail & motors' with 18.1%.

Employment – Business Register and Employment Survey

Data from BRES gives an insight into employment trends over time. However at the Looe level the figures are quite low and with rounding of the data¹ do not enable a high level of analysis. [Most of those employed in farming and all those in defence are excluded from the data set].

The figures suggest that employee numbers in Looe were stable between 2009 and 2015. In contrast employee levels grew across Cornwall (+2.7%), England (+7.8%) and Great Britain (+7.1%).

The figures suggest that employment² numbers in Looe fell between 2009 and 2015. In contrast employment levels grew across Cornwall (+0.5%), England (+6.8%) and Great Britain (+6.1%).

6. Commuting

The Looe workforce

Of those working in Looe, 1,867 in total³, 636 or 34.1% lived in the parish with a further 378 or 20.2% working mainly at or from home. 244 or 13.1% had no fixed place of work. A further 557 worked elsewhere in Cornwall of whom the biggest group lived in adjacent MSOAs – Boconnoc, Lansallos & St. Keyne 180 (9.6%), Liskeard rural 71 (3.8%) and Liskeard 50 (2.7%).

Residents of Looe

Of the residents of Looe, 29.1% worked in the parish itself with a further 17.8% working at or from home. 28.2% worked elsewhere in Cornwall with 12.2% elsewhere in England. 11.9% had no fixed place of work meaning that they could be working in Looe or elsewhere. Of the 266 working in England, the majority, 153 worked in Plymouth with a further 21 in the South Hams.

A further breakdown of the data shows that within Cornwall the main areas where people work were Liskeard rural (5.4%), the areas adjacent to Looe (5.5%) and Liskeard (4.1%).

7. Travel to work

Workplace

The 2011 census includes an analysis of the mode of travel to work including the number working from home based on workplaces. This shows that 43.7% of those working in Looe drove a car or van to work, well below the Cornish average), with a further 4.3% being a passenger in a car or van, again below the Cornish average. A higher percentage worked at home 19.7% compared to 16.4%, while far more walked to work 27.4% compared to 12.1%.

¹ Rounding is required by ONS under the disclosure rules.

² Employment numbers include employees and working proprietors but exclude most of the self-employed.

³ Total varies from workplace workforce total due to different geography.

Distance travelled to work

Of the 1,931 people working in Looe, 710 (37%) travelled less than 5km to work with a further 139 (7%) travelling between 5 and 10km. 466 (24%) worked at or from home with 300 (16%) having no fixed place of work. Of those with no fixed place of work, nearly half worked in Construction.

Distance to work differed according to the sector that people worked in. 50% of those in 'Distribution, hotels and restaurants' travelled less than 5km to work, while 39% of those in 'Financial, Real Estate, Professional and Administrative activities' worked mainly at or from home'. 67% of those in 'Construction' had no fixed place of work.

Looe workers and where they live and how they get to work

Of the 1,807 working in Looe, 43.6% drove a car or van, 27.2% walked to work and 20.1% worked mainly at or from home. Of the 729 who live in the workplace zone, 49.8% worked mainly at or from home, while 29.4% drove a car or van and 16.2% walked.

Residents

Data is available to show how residents travel to work, compared to the Cornish average. This indicates a slightly higher percentage working from or at home – 17.5% to 15.8%, fewer driving a car or van – 50.4% to 60.2% but with far more on foot – 22.9% to 11.8%.

8. JSA claimants

Analysis of the JSA figures for Looe show that numbers have decreased between 2013 and 2015. JSA rates were higher than those for Cornwall, England and the UK in both 2013 and 2014. In 2015 although rates were still above the Cornish average they were similar to the UK rate. So far in 2016 rates have still been above the Cornish average.

Averages were 2013 4.0%, 2014 2.8%, 2015 1.8% and 2016 1.3%.

9. Qualifications

Qualifications– residents

Data from the census shows the skills levels of all those aged 16 plus living in Looe. Compared to Cornwall, in 2011 Looe had a higher percentage of people without qualifications (26.7% to 22.4%) but a lower percentage with level 4 qualifications (23.4% to 25.0%).

Qualifications – workforce

Data from the census shows the skills levels of all those aged 16 plus who work in Looe. Looe had a higher percentage of people without qualifications (14.4% to 10.2%) and a lower percentage with level 4 and above qualifications (25.2% to 29.5%).

10. Earnings [Parliamentary Constituency level]

Workplace

Average annual workplace earnings for all employees in 2015 were £17,340. This equalled 77.1% of the UK average of £22,487. At a Parliamentary Constituency level the highest earnings were in Camborne and Redruth at £19,336 (86% of the UK average). Lowest earnings were in St. Ives PC at £14,327 (63.7% of UK). South East Cornwall earnings equalled £16,449.

Annual Earnings – resident

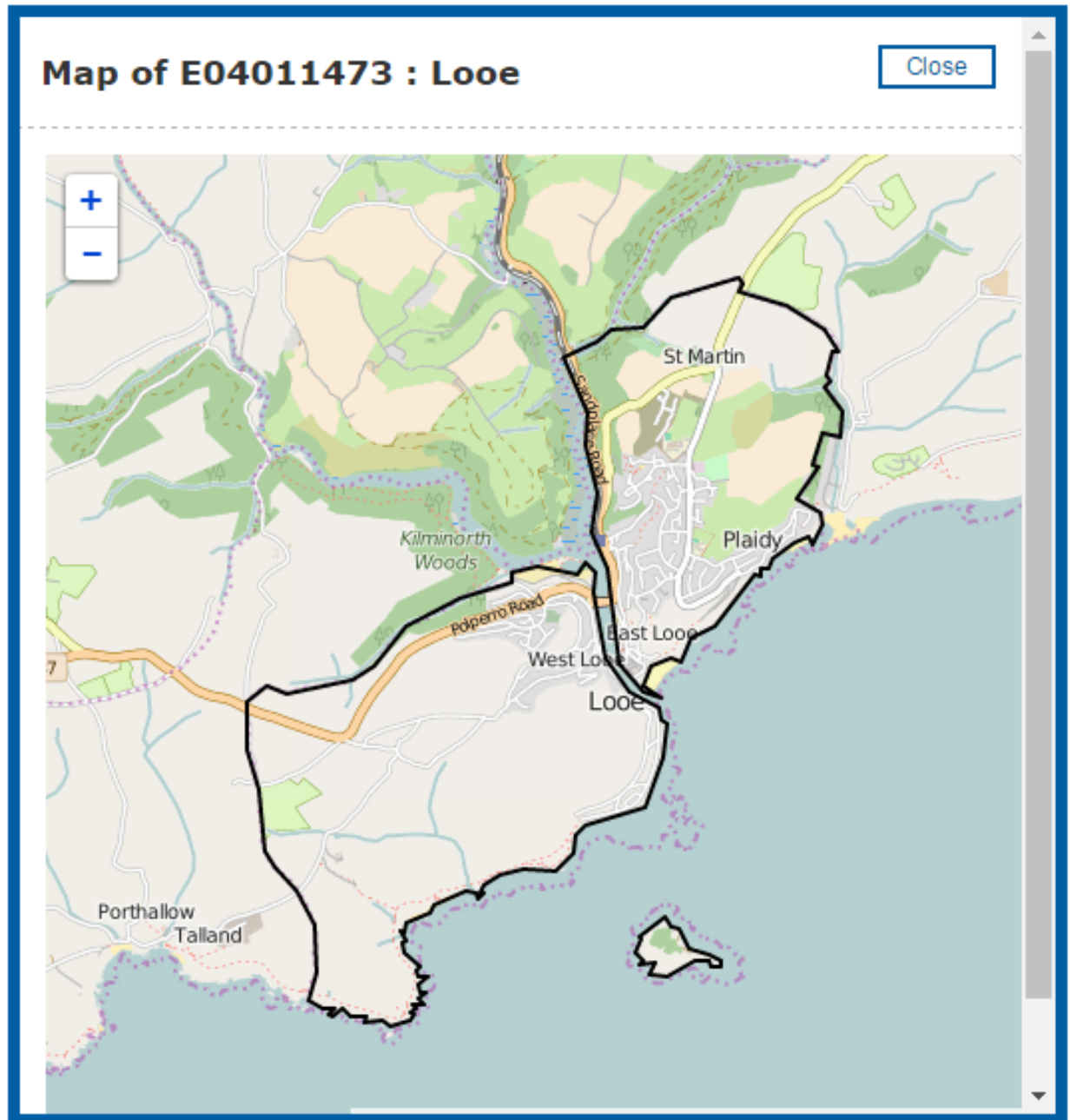
Resident annual earnings in 2015 in Cornwall totalled £18,542 (82.5% of the UK average). Highest resident earnings were in South East Cornwall at £18,971 (84.4% of the UK average), the lowest in St. Ives at £16,800 (74.7% of the UK average).

B Looe - geographies

11. Looe

Looe Parish

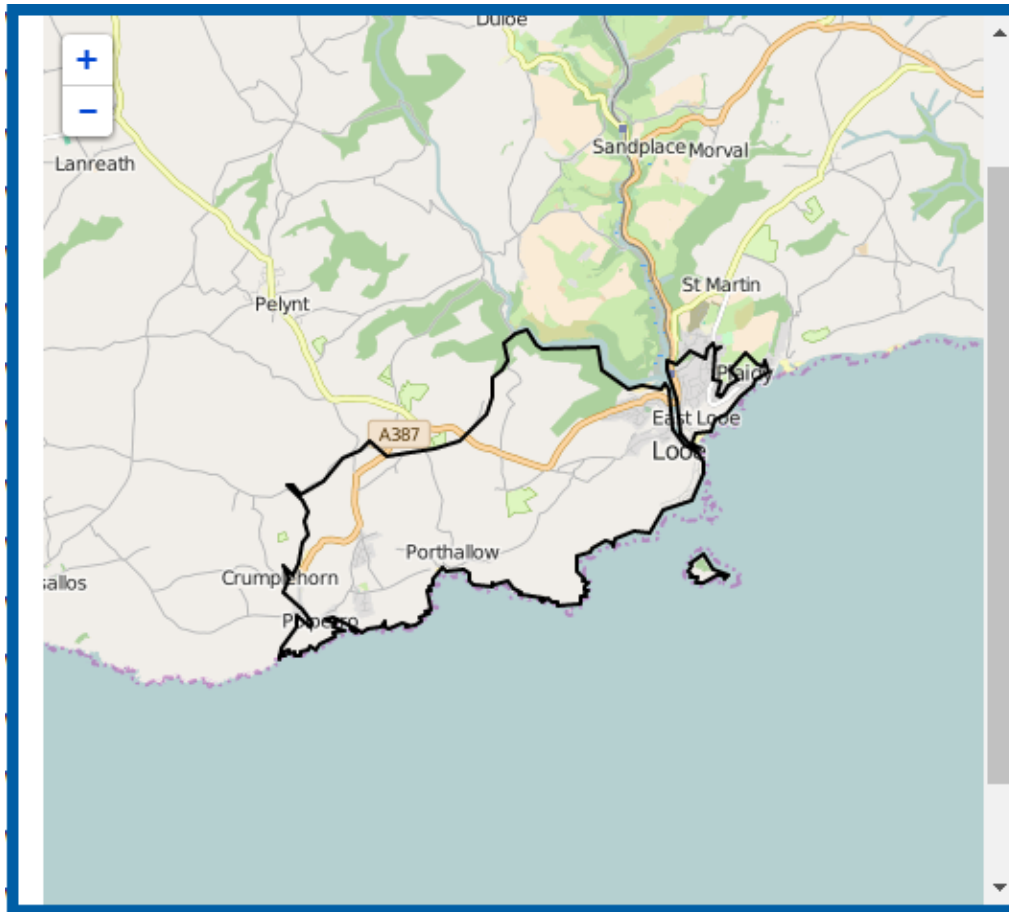
The map below shows the extent of the Parish.



Source: NOMIS.

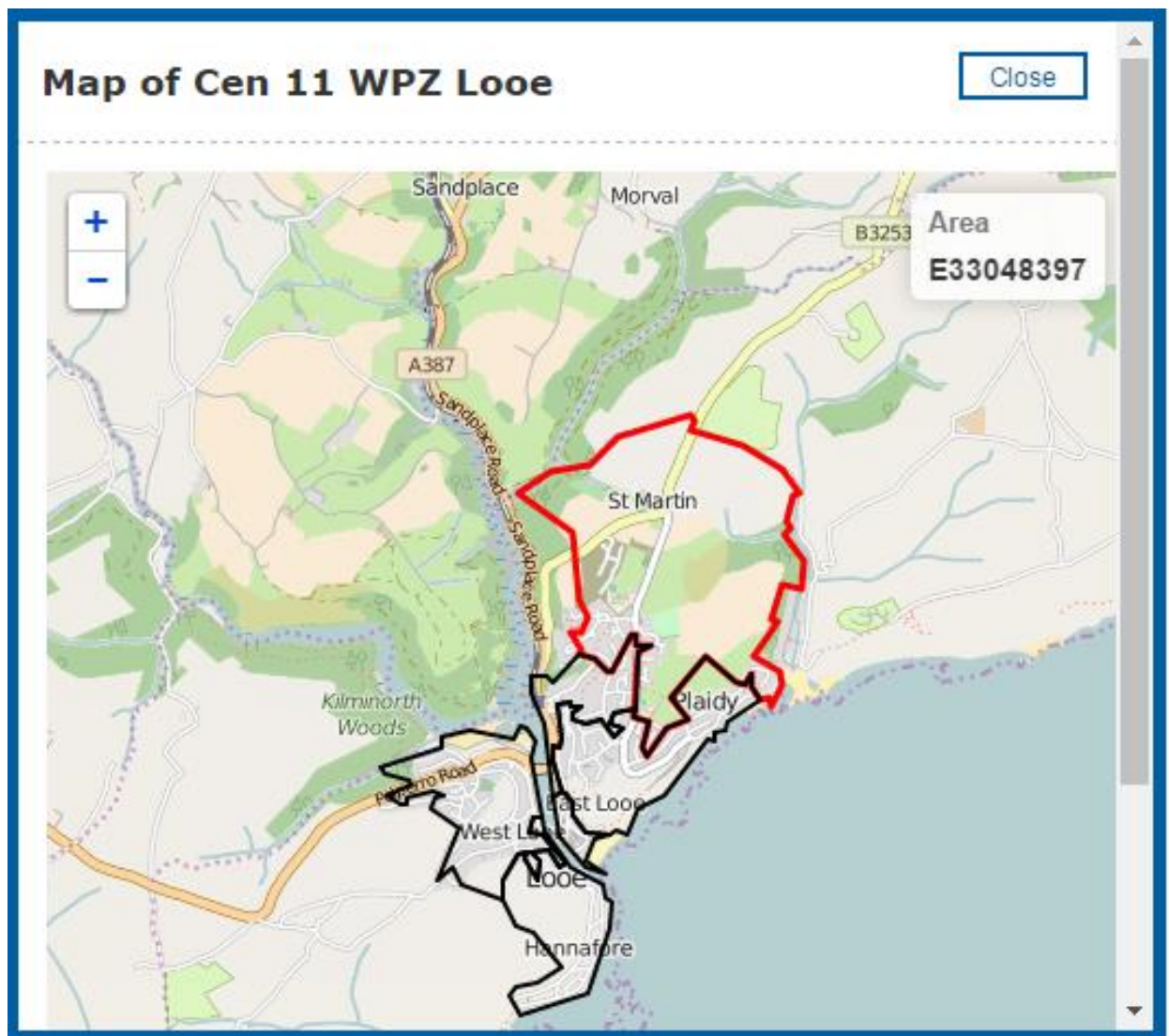
MSOA

The MSOA 037 includes most of Looe Parish with the exception of rural areas to the east but includes rural areas to the west of the parish.

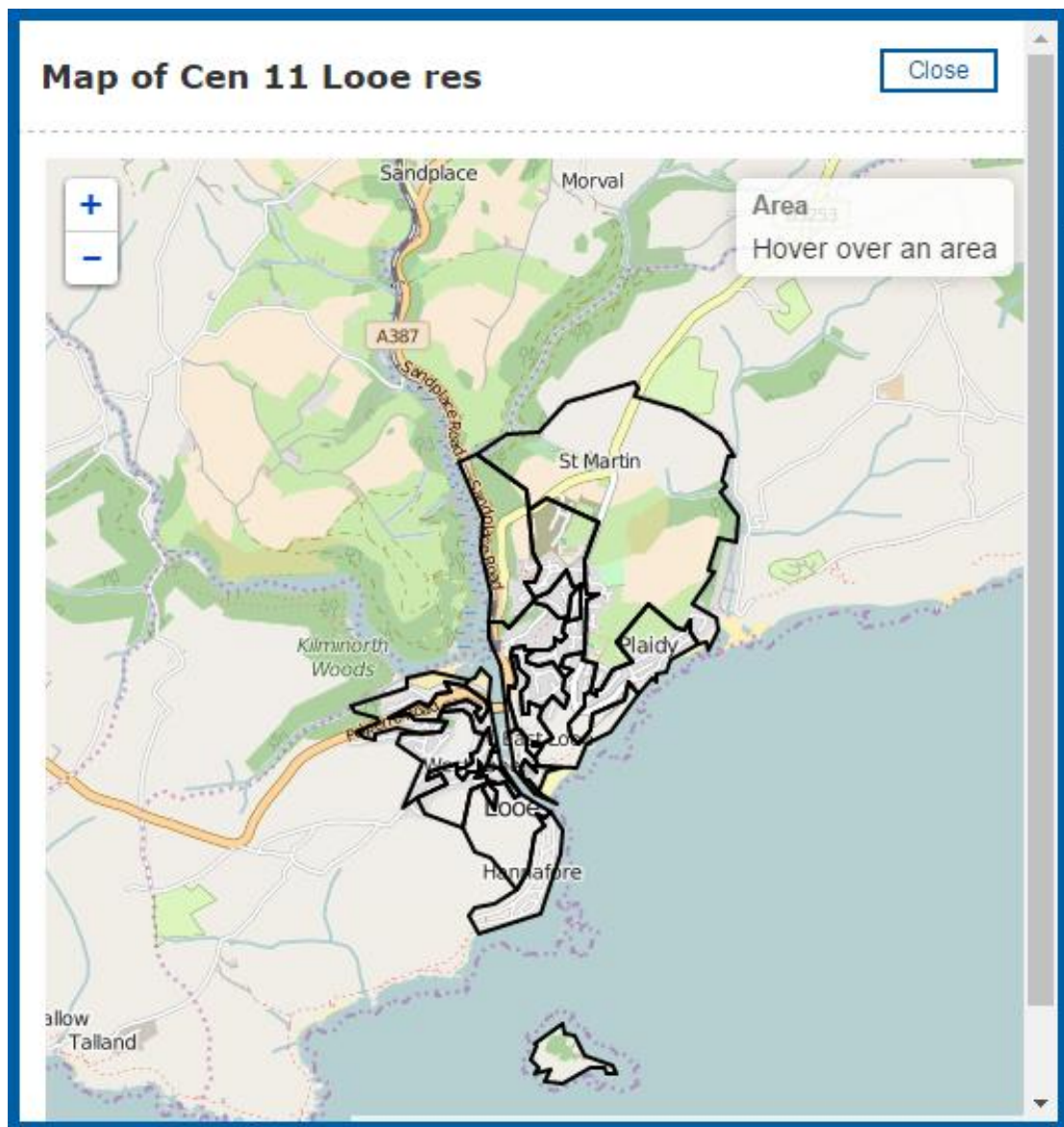


Source: NOMIS.

The Workplace zone based Looe is smaller than the Parish excluding parts of East Looe and West Looe.

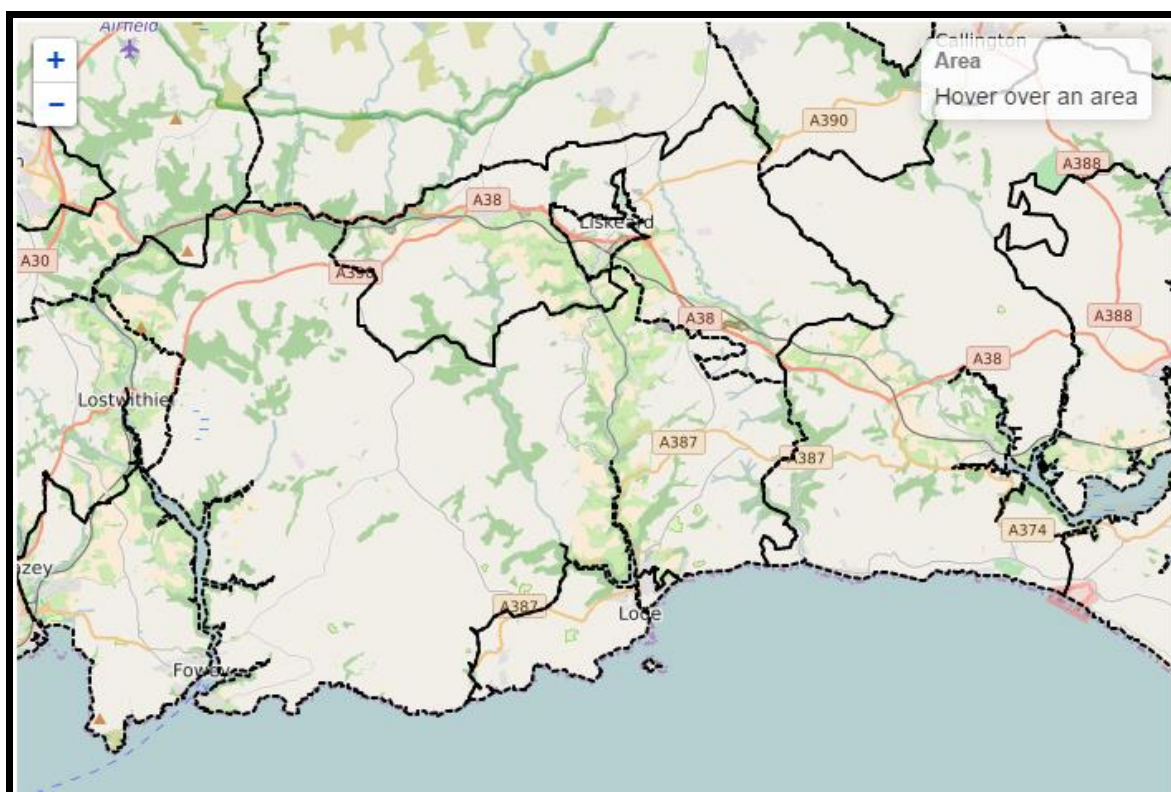


Source: NOMIS.



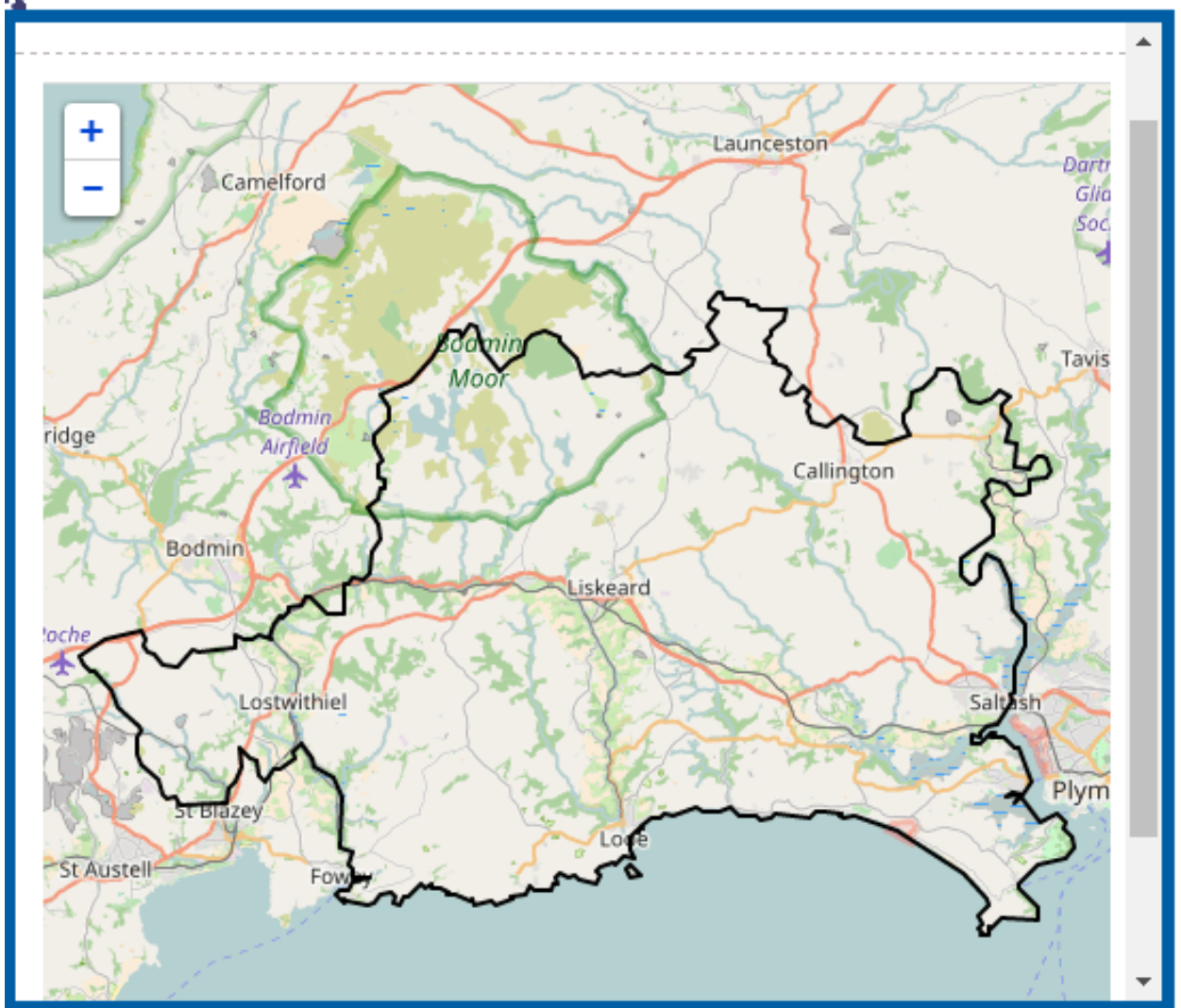
Source: NOMIS.

Looe and adjacent Mid Super Output Areas



Source: NOMIS.

12. SE Cornwall Parliamentary Constituency



Source: NOMIS.

C Looe – data and analysis

13. Community profile

Population [Parish based]

The population of Looe in 2011 was recorded at 5,112. Of these 2,989 were of working age (16-64). The proportion of working age at 58.5% was slightly below the Cornish average (61.5%), while there was a significantly higher proportion of those of pensionable age 28.0% to 21.7%.

Age structure – 2011				
	Looe		Cornwall	England
	No's	%	%	%
0-15	692	13.5	16.9	18.9
16-64	2989	58.5	61.5	64.8
65+	1431	28.0	21.7	16.3
All	5,112	100.0	100.0	100.0

Source: NOMIS, Census 2011.

Dwellings and household spaces [Parish based]

The 2011 census revealed a total of 3,016 dwellings and 3,021 household spaces in Looe. There was a higher percentage of household spaces with no usual residents in Looe than on average for Cornwall – 18.9% to 11.2%. There was a lower share of detached properties – 30.1% to 37.6%, a lower share of semi-detached 20.2% to 24.4%, and a similar share of terraced housing (19.5% to 22.8%). There was a higher percentage of flats 29.7% to 13.4%).

Dwellings and household spaces				
Area	Looe		Cornwall	England
	No's	%	%	%
Dwellings				
Unshared dwelling	3,015	100.0	99.9	99.9
Shared dwelling: Two household spaces	0	0.0	0.0	0.0
Shared dwelling: Three or more household spaces	1	0.0	0.0	0.1
Total	3,016	100.0	100.0	100.0
Household spaces				
With at least one usual resident	2,449	81.1	88.8	95.7
With no usual residents	572	18.9	11.2	4.3
Total	3,021	100.0	100.0	100.0
Household spaces				
Whole house or bungalow: Detached	909	30.1	37.6	22.3
Whole house or bungalow: Semi-detached	610	20.2	24.4	30.7
Whole house or bungalow: Terraced (including end-terrace)	590	19.5	22.8	24.5
Flat, maisonette or apartment: Purpose-built block of flats or tenement	457	15.1	8.6	16.7
Flat, maisonette or apartment: Part of a converted or shared house (including bed-sits)	333	11.0	3.6	4.3
Flat, maisonette or apartment: In a commercial building	110	3.6	1.2	1.1
Caravan or other mobile or temporary structure	12	0.4	1.7	0.4
Total	3,021	100.0	100.0	100.0

Source: NOMIS, Census 2011.

14. Businesses – workplaces/local units [MSOA based]

There were 350 businesses identified in Looe in 2015 – details are set out below. Main categories were 'Accommodation and food services' (26%), 'Wholesale, retail and motors' (24%), and 'Agriculture, forestry and fishing' (10%). Both 'Accommodation and food services' and 'Wholesale, retail & motors' were over-represented in relation to the Cornish average. 'Professional, scientific & technical' and 'Administrative and support services' were under-represented.

Businesses				
	Looe		Cornwall	UK
Sector	No's	%	%	%
A Agriculture, forestry and fishing	35	10	16	5
B Mining and quarrying	0	0	0	0
C Manufacturing	10	3	5	5
D Energy	0	0	0	0
E Water & waste	0	0	0	0
F Construction	20	6	11	10
G Wholesale, retail & motors	85	24	18	17
H Transport and storage	10	3	3	3
I Accommodation and food services	90	26	10	6
J Information and communication	5	1	3	7
K Financial and insurance	5	1	1	2
L Real estate activities	15	4	3	4
M Professional, scientific and technical	25	7	9	16
N Administrative and support	10	3	6	8
O Public admin etc.	5	1	1	1
P Education	0	0	2	2
Q Health and social work	10	3	5	6
R : Arts, entertainment and recreation	15	4	2	3
S : Other service activities	10	3	3	4
All	350	100	100	100

Source: NOMIS, UK Business Counts.

There have been some small changes in percentage shares of sectors between 2010 and 2015 in Looe. 'Wholesale, retail & motors' fell back from 27% to 24%, 'Agriculture, forestry & fishing' and 'Construction' both fell back by 1%, while 'Administrative & support services' increased by 2% from 1% to 3%.

Trends 2010-2015							
Sector/Year	2010	2011	2012	2013	2014	2015	Change
A Agriculture, forestry and fishing	11	9	10	9	9	10	-1
B Mining and quarrying	0	0	0	0	0	0	0
C Manufacturing	3	2	1	2	2	3	0
D Energy	0	0	0	0	0	0	0
E Water & waste	0	0	0	0	0	0	0
F Construction	7	9	7	6	5	6	-1
G Wholesale, retail & motors	27	29	28	25	27	24	-3
H Transport and storage	3	3	3	3	3	3	0
I Accommodation and food services	24	23	22	25	23	26	2
J Information and communication	1	2	1	2	2	1	0
K Financial and insurance	1	2	1	2	2	1	0
L Real estate activities	4	3	3	3	5	4	0
M Professional, scientific and technical	6	5	6	6	6	7	1
N Administrative and support	1	3	3	3	3	3	2
O Public admin etc.	1	2	1	2	2	1	0
P Education	0	0	0	0	0	0	0
Q Health and social work	3	3	4	3	3	3	0
R : Arts, entertainment and recreation	4	5	4	5	5	4	0
S : Other service activities	3	2	1	3	3	3	0

Source: NOMIS, UK Business Counts, workplaces/local units.

15. Economic activity [Parish based]

Data from the 2011 census provides an insight into the economic status of the 16-74 age group. In 2011 there were 2,316 economically active and 1,380 economically inactive in the Parish. Looe had a lower percentage of economically active compared to the Cornish average – 62.7% to 66.7%, and an above average percentage of economically inactive – 37.3% to 33.3%.

Economic status – 2011 (All usual residents aged 16 to 74)				
Area	Looe		Cornwall	England
Category	No's	%	%	%
Economically active				
In employment	2,109	57.1	60.7	62.1
Employee: Part-time	567	15.3	15.4	13.7
Employee: Full-time	947	25.6	31.7	38.6
Self-employed	595	16.1	13.6	9.8
Unemployed	143	3.9	3.3	4.4
Full-time student	64	1.7	2.8	3.4
Total	2,316	62.7	66.7	69.9
Economically Inactive				
Retired	868	23.5	18.9	13.7
Student (including full-time students)	117	3.2	4.3	5.8
Looking after home or family	165	4.5	4.0	4.4
Long-term sick or disabled	163	4.4	4.4	4.0
Other	67	1.8	1.7	2.2
Total	1,380	37.3	33.3	30.1
Unemployed				
Age 16 to 24	33	0.9	1.0	1.2
Age 50 to 74	52	1.4	0.7	0.8
Never worked	8	0.2	0.3	0.7
Long-term unemployed	55	1.5	1.2	1.7
Total	143	3.9	3.3	4.4
All	3,696	100.0	100.0	100.0

Source: NOMIS, Census 2011.

Of the economically active, Looe had a similar percentage in employment to the Cornish average (91.1% to 90.9%), with higher levels of unemployment (6.2% to 4.9%). Looe also had a higher percentage of people who were self-employed (25.7% to 20.4%).

Of the economically inactive, Looe had a lower share of Full-time students (8.5% to 12.9%), and Long-term sick or disabled (11.8% to 13.1%); the same 'Looking after home or family' (12.0%), but with a higher share of Retired – 62.9% to 56.9%.

In relation to the unemployed, Looe had a lower share of those who were aged 25-49 – 40.6% to 47.2%.

Economic status - 2011 (All usual residents aged 16 to 74)				
Area	Looe		Cornwall	England
	No's	%	%	%
Economically active				
In employment	2,109	91.1	90.9	88.8
Employee: Part-time	567	24.5	23.0	19.6
Employee: Full-time	947	40.9	47.5	55.2
Self-employed	595	25.7	20.4	14.0
Unemployed	143	6.2	4.9	6.3
Full-time student	64	2.8	4.2	4.9
Total	2,316	100.0	100.0	100.0
Economically Inactive				
Retired	868	62.9	56.9	45.5
Student (including full-time students)	117	8.5	12.9	19.3
Looking after home or family	165	12.0	12.0	14.5
Long-term sick or disabled	163	11.8	13.1	13.5
Other	67	4.9	5.1	7.3
Total	1,380	100.0	100.0	100.0
Unemployed				
Age 16 to 24	33	23.1	30.2	27.7
Age 25 to 49	58	40.6	47.2	53.8
Age 50 to 74	52	36.4	22.7	18.5
Never worked	8	5.6	10.1	16.2
Long-term unemployed	55	38.5	35.7	39.3

Source: NOMIS, Census 2011.

16. Hours worked [Parish based]

Overall a slightly higher proportion of Looe residents worked part-time (35.3%) than on average for Cornwall (33.9%). Although a lower percentage worked full-time, there was a significantly higher percentage who worked for 49 or more hours per week – 16.1 to 13.8%.

Hours worked - 2011				
Area	Looe		Cornwall	England
All	No's	%	%	%
Part-time: 15 or less	240	11.1	10.8	9.6
Part-time: 16-30	525	24.2	23.1	19.4
Part-time	765	35.3	33.9	29.0
Full-time: 31-48	1,052	48.6	52.3	57.6
Full-time: 49 or more	348	16.1	13.8	13.3
Full-time	1,400	64.7	66.1	70.9
Total	2,165	100.0	100	100.0

Source: NOMIS, Census 2011.

17. Employment

Employment – residents [Parish based]

Data from the 2011 census gives a fuller picture of which sectors residents of Looe were employed in. The figures give total employment including employees and self-employed.

There were 2,165 residents in employment, the main sectors of employment were: 'Wholesale, retail and motors' (17.8%), and 'Accommodation & food services' (16.5 %). There was a slightly higher dependence on 'Wholesale, retail and motors' in the Parish than is common across Cornwall and a higher dependence on 'Accommodation & food services'.

Employment of residents - 2011				
Area	Looe		Cornwall	England
Sector	No's	%	%	%
A Agriculture, forestry & fishing	53	2.4	3.0	0.8
B Mining & quarrying	3	0.1	0.7	0.2
C Manufacturing	132	6.1	7.9	8.8
D Energy	7	0.3	0.4	0.6
E Water & waste	16	0.7	0.8	0.7
F Construction	220	10.2	9.0	7.7
G Wholesale, retail & motors	385	17.8	16.8	15.9
H Transport & storage	97	4.5	3.7	5.0
I Accommodation & food service	357	16.5	9.2	5.6
J Information & communication	39	1.8	1.7	4.1
K Financial & insurance	32	1.5	1.5	4.4
L Real estate	37	1.7	1.4	1.5
M Professional, scientific & technical	80	3.7	4.7	6.7
N Administrative & support service	68	3.1	4.3	4.9
O Public admin etc.	117	5.4	6.3	5.9
P Education	167	7.7	9.7	9.9
Q Human health & social work	246	11.4	13.5	12.4
R, S, T, U Other	109	5.0	5.3	5.0
Total	2,165	100.0	100.0	100.0

Source: NOMIS, Census 2011.

Employment – workplace [Workplace zone based]

The table below shows the workforce by sector for each area from the 2011 census. 1,783 people worked in Looe with the three main sectors being 'Accommodation and food services' (21.0%) 'Wholesale, retail and motors' (20.1%) and 'Health' (11.1%). The first two of these had higher shares than the average for Cornwall, particularly 'Accommodation & food services'.

Workforce by sector - 2011				
Area	Looe		Cornwall	England
Sector	No's	%	%	%
A Agriculture, forestry & fishing	27	1.5	3.1	0.8
B Mining & quarrying	2	0.1	0.6	0.1
C Manufacturing	66	3.7	7.8	8.8
D Energy	2	0.1	0.3	0.6
E Water & waste	6	0.3	0.8	0.7
F Construction	176	9.9	9.1	7.7
G Wholesale, retail & motors	359	20.1	17.4	16.0
H Transport & storage	66	3.7	3.6	5.0
I Accommodation & food service	374	21.0	9.5	5.6
J Information & communication	25	1.4	1.7	4.1
K Financial & insurance	30	1.7	1.5	4.4
L Real estate	39	2.2	1.4	1.5
M Professional, scientific & technical	54	3.0	4.6	6.7
N Administrative & support services	37	2.1	4.4	4.9
O Public admin etc.	43	2.4	5.8	5.9
P Education	170	9.5	9.6	9.9
Q Human health & social work	198	11.1	13.4	12.4
R,S Arts, entertainment & recreation; other services	107	6.0	5.3	4.8
T Household services	2	0.1	0.1	0.1
U of extraterritorial organisations & bodies	0	0.0	0.0	0.1
All	1,783	100.0	100.0	100.0

Source: NOMIS, Census 2011.

Detailed analysis of workplace employment [MSOA based]

Detailed analysis of employment in Looe is available from the Census at MSOA level. This gives a total of 1,208 in employment. 'Accommodation & food services accounted for 25% of the total' followed by 'Wholesale, retail & motors' at 22.6%.

Workplace employment by sector 2011 (No's)				
Status	Employee	Self-employed	Total	
Sector	No's	No's	No's	%
Agriculture, forestry & fishing	3	42	45	2.3
Mining & quarrying	2	0	2	0.1
Manufacturing	33	38	71	3.6
Energy	2	0	2	0.1
Water & waste	4	1	5	0.3
Construction	49	167	216	11.0
Wholesale, retail & motors	307	136	443	22.6
Transport & storage	29	31	60	3.1
Accommodation & food services	353	137	490	25.0
Information & communication	14	18	32	1.6
Financial & insurance	26	6	32	1.6
Real estate	30	14	44	2.2
Professional, scientific & technical	39	26	65	3.3
Administration & support services	17	20	37	1.9
Public admin etc.	38	7	45	2.3
Education	46	31	77	3.9
Health & social work	153	25	178	9.1
Arts, entertainment & recreation	30	21	51	2.6
Other services	32	30	62	3.2
Households	1	2	3	0.2
Total	1,208	752	1,960	100.0

Source: ONS, Census 2011, commissioned tables.

Overall, the self-employed accounted for 38.4% of those employed. However, the share varied by sector being highest amongst those in 'Agriculture, forestry and fishing' at 93.3%, 'Construction' at 77.3%, and 'Information & communication' at 56.3%.

Workplace employment by sector 2011 (%)			
	Employee	Self-employed	Total
Agriculture, forestry & fishing	6.7	93.3	100.0
Mining & quarrying	100.0	0.0	100.0
Manufacturing	46.5	53.5	100.0
Energy	100.0	0.0	100.0
Water & waste	80.0	20.0	100.0
Construction	22.7	77.3	100.0
Wholesale, retail & motors	69.3	30.7	100.0
Transport & storage	48.3	51.7	100.0
Accommodation & food services	72.0	28.0	100.0
Information & communication	43.8	56.3	100.0
Financial & insurance	81.3	18.8	100.0
Real estate	68.2	31.8	100.0
Professional, scientific & technical	60.0	40.0	100.0
Administration & support services	45.9	54.1	100.0
Public admin etc.	84.4	15.6	100.0
85 Education	59.7	40.3	100.0
Health & social work	86.0	14.0	100.0
Arts, entertainment & recreation	58.8	41.2	100.0
Other services	51.6	48.4	100.0
Households	33.3	66.7	100.0
Total	61.6	38.4	100.0

Source: ONS, Census 2011, commissioned tables.

There were some differences in employment share according to status. Looking at employees, 'Accommodation & food services' accounted for the largest share with 29.2%, followed by 'Wholesale, retail & motors' with 25.4%. Amongst the self-employed 'Construction' accounted for 22.2% of the total followed by 'Accommodation & food services' with 18.2% and 'Wholesale, retail & motors' with 18.1%.

Workplace employment by sector 2011 (No's)

Status	Employee	Self-employed	Employee	Self-employed
Sector	No's	No's	%	%
Agriculture, forestry & fishing	3	42	0.2	5.6
Mining & quarrying	2	0	0.2	0.0
Manufacturing	33	38	2.7	5.1
Energy	2	0	0.2	0.0
Water & waste	4	1	0.3	0.1
Construction	49	167	4.1	22.2
Wholesale, retail & motors	307	136	25.4	18.1
Transport & storage	29	31	2.4	4.1
Accommodation & food services	353	137	29.2	18.2
Information & communication	14	18	1.2	2.4
Financial & insurance	26	6	2.2	0.8
Real estate	30	14	2.5	1.9
Professional, scientific & technical	39	26	3.2	3.5
Administration & support services	17	20	1.4	2.7
Public admin etc.	38	7	3.1	0.9
Education	46	31	3.8	4.1
Health & social work	153	25	12.7	3.3
Arts, entertainment & recreation	30	21	2.5	2.8
Other services	32	30	2.6	4.0
Households	1	2	0.1	0.3
Total	1,208	752	100.0	100.0

Source: ONS, Census 2011, commissioned tables.

18. Employment – Business Register and Employment Survey

Data from BRES gives an insight into employment trends over time. However at the Looe level the figures are quite low and with rounding do not enable a high level of analysis. [Most of those employed in farming and all those in defence are excluded from the data set].

The figures suggest that employee numbers in Looe were stable between 2009 and 2015. In contrast employee levels grew across Cornwall (+2.7%), England (+7.8%) and Great Britain (+7.1%).

Workplace employment trends - employees				
	Looe	Cornwall	England	Great Britain
2009	1400	194500	23064700	26642600
2010	1500	194600	23085300	26581300
2011	1400	190100	23073200	26593500
2012	1400	191000	23256000	26752900
2013	1400	194100	23560800	27096300
2014	1400	196200	24285800	27931600
2015	1400	199800	24866600	28531100
% Change 09-15	0.0	2.7	7.8	7.1

Source: ONS/NOMIS, Business Register and Employment Survey.

The figures suggest that employment⁴ numbers in Looe fell between 2009 and 2015. In contrast employment levels grew across Cornwall (+0.5%), England (+6.8%) and Great Britain (+6.1%).

Workplace employment trends - employment				
	Looe	Cornwall	England	Great Britain
2009	1700	210300	24068100	27858200
2010	1700	208200	23982000	27671600
2011	1600	206000	24062600	27796500
2012	1700	204600	24208200	27905400
2013	1600	206200	24481500	28217500
2014	1600	208300	25137200	28970000
2015	1500	211400	25698800	29545600
% Change 09-15	-11.8	0.5	6.8	6.1

Source: ONS/NOMIS, Business Register and Employment Survey.

⁴ Employment numbers include employees and working proprietors but exclude most of the self-employed.

19. Commuting

The Looe workforce [MSOA and OA based]

Of those working in Looe, 1,867 in total⁵, 636 or 34.1% lived in the parish with a further 378 or 20.2% working mainly at or from home. 244 or 13.1% had no fixed place of work. A further 557 worked elsewhere in Cornwall of whom the biggest group lived in adjacent MSOAs – Boconnoc, Lansallos & St. Keyne 180 (9.6%), Liskeard rural 71 (3.8%) and Liskeard 50 (2.7%).

Looe - workforce – residence		
Place of residence	No's	%
Cen 11 Looe Parish	636	34.1
Mainly work at or from home	378	20.2
No fixed place	244	13.1
Elsewhere in Cornwall	557	29.8
<i>Boconnoc, Lansallos and St Keyne</i>	180	9.6
<i>Liskeard Rural</i>	71	3.8
<i>Liskeard</i>	50	2.7
<i>Looe</i>	46	2.5
<i>St Germans, Quethiock and St Dominick</i>	39	2.1
<i>Bodmin Moor E and Linkinhorne</i>	32	1.7
<i>Torpoint rural</i>	16	0.9
<i>Callington and St Ive</i>	13	0.7
<i>Other MSOAs</i>	110	5.9
England	52	2.8
Total	1,867	100.0

Source: NOMIS, Census 2011.

Residents of Looe [MSOA and Parish]

The table shows where residents of Looe work. 29.1% worked in the parish itself with a further 17.8% working at or from home. 28.2% worked elsewhere in Cornwall with 12.2% elsewhere in England. 11.9% had no fixed place of work meaning that they could be working in Looe or elsewhere. Of the 266 working in England, the majority, 153 worked in Plymouth with a further 21 in the South Hams.

⁵ Total varies from workplace workforce total due to different geography.

Looe - Residents place of work		
Place of work	No's	%
Cen 11 Looe Parish	636	29.1
Elsewhere in Cornwall	616	28.2
Mainly work at or from home	390	17.8
Elsewhere in England	266	12.2
(Of which Plymouth)	(153)	(7.0)
No fixed place	260	11.9
Offshore installation	7	0.3
Outside UK	7	0.3
Scotland	5	0.2
All	2,187	100.0

Source: NOMIS, Census 2011.

A further breakdown of the data shows that within Cornwall the main areas where people work were Liskeard rural (5.4%), the areas adjacent to Looe (5.5%) and Liskeard (4.1%).

Looe - Residents place of work		
Place of work	No's	%
Liskeard Rural (16) ⁶	119	5.4
Adjacent MSOAs	121	5.5
Liskeard (17)	89	4.1
Callington and St Ive (13)	25	1.1
Bodmin Moor E and Linkinhorne (12)	23	1.1
Bodmin East (14)	22	1.0
Saltash rural (22)	16	0.7
St Germans, Quethiock and St Dominick (23)	14	0.6
Saltash East (26)	14	0.6
Truro West (44)	14	0.6
Torpoint rural (34)	12	0.5
Truro and Threemilestone (43)	12	0.5
Treverbyn, Luxulyan and Lostwithiel (27)	11	0.5
Torpoint (29)	10	0.5
St Austell South (39)	10	0.5
Sub-total	512	23.4
All	616	28.2

Source: NOMIS, Census 2011.

⁶ Area codes in brackets.

20. Travel to work

Workplace

The 2011 census includes an analysis of the mode of travel to work including the number working from home based on workplace zones. This shows that 43.7% of those working in Looe drove a car or van to work, well below the Cornish average), with a further 4.3% being a passenger in a car or van, again below the Cornish average. A higher percentage worked at home 19.7% compared to 16.4%, while far more walked to work 27.4% compared to 12.1%.

Workplace - Method of travel to work (2011)				
Method of travel to work (2011 specification)	Looe		Cornwall	England
	No's	%	%	%
Work mainly at or from home	351	19.7	16.4	10.3
Underground, metro, light rail or tram	0	0.0	0.1	3.9
Train	8	0.4	0.8	5.1
Bus, minibus or coach	35	2.0	2.3	7.3
Taxi	12	0.7	0.3	0.5
Motorcycle, scooter or moped	15	0.8	1.1	0.8
Driving a car or van	779	43.7	59.7	54.1
Passenger in a car or van	77	4.3	5.2	4.9
Bicycle	13	0.7	1.5	2.9
On foot	488	27.4	12.1	9.8
Other method of travel to work	5	0.3	0.5	0.4
All	1,783	100.0	100.0	100.0

Source: NOMIS, Census 2011.

Distance travelled to work [Looe MSOA]

Of the 1,931 people working in Looe, 710 (37%) travelled less than 5km to work with a further 139 (7%) travelling between 5 and 10km. 466 (24%) worked at or from home with 300 (16%) having no fixed place of work. Of those with no fixed place of work, nearly half worked in Construction.

Workplace - distance to work and sector (No's)								
Sector	Less than 5km	5km to 10km	10km to 30km	30km to 60km	plus	Home	No fixed place	All
Agriculture, forestry & fishing	5	1	0	0	0	14	22	42
Manufacturing	18	0	11	2	0	23	16	70
Energy & water	3	1	0	1	0	0	4	9
Construction	9	2	9	4	2	46	144	216
Distribution, hotels & restaurants	462	81	132	17	15	187	30	924
Transport & communication	23	4	2	0	1	37	23	90
Financial, Real Estate, Professional & Administrative activities	43	12	24	4	2	66	20	171
Public admin, education & health	110	27	58	7	5	60	29	296
Other	37	11	17	2	1	33	12	113
All	710	139	253	37	26	466	300	1,931

Source: NOMIS, Census 2011.

Distance to work differed according to the sector that people worked in. 50% of those in 'Distribution, hotels and restaurants' travelled less than 5km to work, while 39% of those in 'Financial, Real Estate, Professional and Administrative activities' worked mainly at or from home'. 67% of those in 'Construction' had no fixed place of work.

Workplace - distance to work and sector (%)								
Industry	Less than 5km	5km to 10km	10km to 30km	30km to 60km	60km plus	Home	No fixed place	All
Agriculture, forestry & fishing	12	2	0	0	0	33	52	100
Manufacturing	26	0	16	3	0	33	23	100
Energy & water	33	11	0	11	0	0	44	100
Construction	4	1	4	2	1	21	67	100
Distribution, hotels & restaurants	50	9	14	2	2	20	3	100
Transport & communication	26	4	2	0	1	41	26	100
Financial, Real Estate, Professional & Administrative activities	25	7	14	2	1	39	12	100
Public admin, education & health	37	9	20	2	2	20	10	100
Other	33	10	15	2	1	29	11	100
All	37	7	13	2	1	24	16	100

Source: NOMIS, Census 2011.

Looe workers and where they live and how they get to work

The tables below sets out where people live who work in Looe and how they travel to work. Of the 1,807 working in Looe, 43.6% drove a car or van, 27.2% walked to work and 20.1% worked mainly at or from home. Of the 729 who live in the workplace zone, 49.8% worked mainly at or from home, while 29.4% drove a car or van and 16.2% walked.

Workplace and usual residence by method of travel to work (2011) (No's)

Method	Usual residence	In the WPZ ⁷	Outside the WPZ but within the MSOA	Outside the MSOA area but within the LA	Outside the LA but within the region	Outside the region but within England and Wales
Work mainly at or from home	363	363	0	0	0	0
Underground, metro, light rail or tram	0	0	0	0	0	0
Train	8	2	1	4	1	0
Bus, minibus or coach	35	2	9	23	1	0
Taxi	12	6	2	4	0	0
Motorcycle, scooter or moped	15	3	4	7	1	0
Driving a car or van	788	214	140	393	34	7
Passenger in a car or van	77	15	12	45	4	1
Bicycle	13	2	3	8	0	0
On foot	491	118	220	148	1	4
Other method of travel to work	5	4	0	1	0	0
All	1,807	729	391	633	42	12

Source: NOMIS, Census 2011.

⁷ WPZ = workplace zone

Workplace and usual residence by method of travel to work (2011) (%)

Method	Usual residence	In the WPZ	Outside the WPZ but within the MSOA	Outside the MSOA area but within the LA	Outside the LA but within the region	Outside the region but within England and Wales
Work mainly at or from home	20.1	49.8	0.0	0.0	0.0	0.0
Underground, metro, light rail or tram	0.0	0.0	0.0	0.0	0.0	0.0
Train	0.4	0.3	0.3	0.6	2.4	0.0
Bus, minibus or coach	1.9	0.3	2.3	3.6	2.4	0.0
Taxi	0.7	0.8	0.5	0.6	0.0	0.0
Motorcycle, scooter or moped	0.8	0.4	1.0	1.1	2.4	0.0
Driving a car or van	43.6	29.4	35.8	62.1	81.0	58.3
Passenger in a car or van	4.3	2.1	3.1	7.1	9.5	8.3
Bicycle	0.7	0.3	0.8	1.3	0.0	0.0
On foot	27.2	16.2	56.3	23.4	2.4	33.3
Other method of travel to work	0.3	0.5	0.0	0.2	0.0	0.0
All	100.0	100.0	100.0	100.0	100.0	100.0

Source: NOMIS, Census 2011.

Residents

Data is available to show how residents travel to work compared to the Cornish average. This indicates a slightly higher percentage working from or at home – 17.5% to 15.8%, fewer driving a car or van – 50.4% to 60.2% but with far more on foot – 22.9% to 11.8%.

Residents - Method of travel to work (2011)

Area	Looe		Cornwall	England
Method of travel to work (2001 specification)	No's	%	%	%
Work mainly at or from home	378	17.5	15.8	10.3
Underground, metro, light rail, tram	3	0.1	0.1	4.0
Train	16	0.7	0.9	5.2
Bus, minibus or coach	40	1.8	2.4	7.3
Taxi	17	0.8	0.3	0.5
Motorcycle, scooter or moped	20	0.9	1.1	0.8
Driving a car or van	1,091	50.4	60.2	54.0
Passenger in a car or van	78	3.6	5.1	4.9
Bicycle	15	0.7	1.5	2.9
On foot	496	22.9	11.8	9.8
Other method of travel to work	11	0.5	0.7	0.5
Total	2,165	100.0	100.0	100.0

Source: NOMIS, Census 2011. [2001 definition]

21. JSA claimants

Analysis of the JSA figures for Looe show that numbers have decreased between 2013 and 2015. JSA rates were higher than those for Cornwall, England and the UK in both 2013 and 2014. In 2015 although rates were still above the Cornish average they were similar to the UK rate. So far in 2016 rates have still been above the Cornish average.

Averages were 2013 4.0%, 2014 2.8%, 2015 1.8% and 2016 1.3%.

JSA count					
	Looe		Cornwall	England	United Kingdom
2013	No's	%	%	%	%
January	136	5.9	3.3	3.8	3.9
February	128	5.6	3.2	3.8	3.9
March	116	5.1	3.0	3.8	3.9
April	96	4.2	2.8	3.7	3.8
May	98	4.3	2.6	3.6	3.7
June	84	3.7	2.4	3.4	3.5
July	70	3.1	2.2	3.4	3.5
August	60	2.6	2.1	3.3	3.4
September	56	2.4	2.1	3.1	3.2
October	71	3.1	2.0	3.0	3.1
November	83	3.6	2.1	2.9	3.0
December	92	4.0	2.2	2.8	2.9
Average	91	4.0	2.5	3.4	3.5

Source: NOMIS, Jobcentre Plus.

JSA count					
	Looe		Cornwall	England	United Kingdom
2014	No's	%	%	%	%
January	104	4.5	2.3	2.9	3.0
February	102	4.5	2.3	2.9	3.0
March	87	3.8	2.1	2.8	2.9
April	77	3.4	1.9	2.7	2.8
May	59	2.6	1.7	2.5	2.7
June	55	2.4	1.5	2.4	2.5
July	47	2.1	1.4	2.3	2.4
August	38	1.7	1.3	2.2	2.3
September	47	2.1	1.3	2.1	2.2
October	46	2.0	1.3	2.0	2.2
November	52	2.3	1.4	1.9	2.1
December	56	2.4	1.4	1.9	2.0
All	64	2.8	1.7	2.4	2.5

Source: NOMIS, Jobcentre Plus.

JSA count					
	Looe		Cornwall	England	United Kingdom
2015	No's	%	%	%	%
January	68	3.0	1.6	1.9	2.1
February	60	2.6	1.6	2.0	2.1
March	53	2.3	1.5	1.9	2.0
April	43	1.9	1.3	1.8	1.9
May	42	1.8	1.2	1.7	1.9
June	36	1.6	1.1	1.7	1.8
July	36	1.6	1.0	1.6	1.8
August	26	1.1	0.9	1.6	1.7
September	26	1.1	1.0	1.6	1.7
October	32	1.4	1.0	1.5	1.6
November	41	1.8	1.0	1.5	1.6
December	37	1.6	1.0	1.4	1.5
All	42	1.8	1.2	1.7	1.8

Source: NOMIS, Jobcentre Plus.

JSA count					
	Looe		Cornwall	England	United Kingdom
2016	No's	%	%	%	%
January 2016	36	1.6	1.1	1.5	1.6
February 2016	43	1.9	1.1	1.5	1.6
March 2016	34	1.5	1.1	1.5	1.6
April 2016	30	1.3	1.0	1.4	1.5
May 2016	34	1.5	1.0	1.4	1.5
June 2016	29	1.3	0.9	1.3	1.4
July 2016	19	0.8	0.9	1.3	1.4
August 2016	15	0.7	0.8	1.2	1.3
All	30	1.3	1.0	1.4	1.5

Source: NOMIS, Jobcentre Plus.

22. Qualifications

Qualifications – residents [Parish based]

Data from the census shows the qualification levels of all those aged 16 plus living in Looe. Compared to Cornwall, in 2011 Looe had a higher percentage of people without qualifications (26.7% to 22.4%) but a lower percentage with level 4 qualifications (23.4% to 25.0%).

Qualifications – All usual residents aged 16 and over, 2011				
Area	Looe		Cornwall	England
Skill level	No's	%	%	%
None	1,179	26.7	22.4	22.5
Level 1	585	13.2	13.4	13.3
Level 2	759	17.2	17.4	15.2
Apprenticeship	229	5.2	4.5	3.6
Level 3	446	10.1	13.1	12.4
Level 4 and above	1,034	23.4	25.0	27.4
Other	188	4.3	4.2	5.7
All	4,420	100.0	100.0	100.0

Source: NOMIS, Census 2011.

Qualifications – workforce [Workplace zone based]

Data from the census shows the qualification levels of all those aged 16 plus who work in Looe. Looe had a higher percentage of people without qualifications 14.4% to 10.2%) and a lower percentage with level 4 and above qualifications (25.2% to 29.5%).

Highest level of qualification (Workplace)				
Area	Looe		Cornwall	England
Qualification level	No's	%	%	%
None	256	14.4	10.2	10.1
Level 1	293	16.4	15.0	14.2
Level 2	400	22.4	20.0	16.7
Apprenticeship	87	4.9	4.5	3.6
Level 3	247	13.9	16.8	14.7
Level 4 and above	449	25.2	29.5	35.1
Other	51	2.9	3.9	5.5
All	1,783	100.0	100.0	100.0

Source: NOMIS, Census 2011.

23. Earnings

Workplace

Average annual workplace earnings for all employees in 2015 were £17,340. This equalled 77.1% of the UK average of £22,487. At a Parliamentary Constituency level the highest earnings were in Camborne and Redruth at £19,336 (86% of the UK average). Lowest earnings were in St. Ives PC at £14,327 (63.7% of UK). South East Cornwall earnings equalled £16,449.

Workplace earnings - annual £					
	All	Male	Female	Full-time	Part-time
United Kingdom	22,487	27,734	17,465	27,645	9,275
England	22,720	28,003	17,492	27,872	9,200
South West	20,754	25,970	15,647	25,982	8,986
Cornwall UA	17,340	21,467	14,294	22,237	9,036
Camborne and Redruth PC	19,336	22,752	14,641	22,493	x
North Cornwall PC	x	21,039	x	x	9,608
South East Cornwall PC	16,449	18,680	11,279	18,770	8,809
St Austell and Newquay PC	16,725	22,368	12,539	22,150	8,666
St Ives PC	14,327	18,543	12,007	20,156	x
Truro and Falmouth PC	18,860	22,154	16,517	23,771	10,167

Source: ONS/NOMIS, Annual Survey of Hours and Earnings.

Workplace earnings, all - % of UK					
	All	Male	Female	Full-time	Part-time
United Kingdom	100	100	100	100	100
England	101.0	101.0	100.2	100.8	99.2
South West	92.3	93.6	89.6	94.0	96.9
Cornwall UA	77.1	77.4	81.8	80.4	97.4
Camborne and Redruth PC	86.0	82.0	83.8	81.4	
North Cornwall PC		75.9			103.6
South East Cornwall PC	73.1	67.4	64.6	67.9	95.0
St Austell and Newquay PC	74.4	80.7	71.8	80.1	93.4
St Ives PC	63.7	66.9	68.7	72.9	
Truro and Falmouth PC	83.9	79.9	94.6	86.0	109.6

Source: ONS/NOMIS, Annual Survey of Hours and Earnings.

Annual Earnings – resident

Resident annual earnings in 2015 in Cornwall totalled £18,542 (82.5% of the UK average). Highest resident earnings were in South East Cornwall at £18,971 (84.4% of the UK average), the lowest in St. Ives at £16,800 (74.7% of the UK average).

Resident earnings - annual £					
	All	Male	Female	Full-time	Part-time
United Kingdom	22,487	27,734	17,465	27,645	9,275
England	22,716	28,000	17,500	27,869	9,230
South West	21,283	26,590	16,030	26,518	9,127
Cornwall UA	18,542	22,780	14,990	23,346	9,156
Camborne and Redruth PC	18,217	22,957	13,176	22,830	10,115
North Cornwall PC	x	22,726	x	x	10,011
South East Cornwall PC	18,971	22,545	16,593	23,990	9,215
St Austell and Newquay PC	19,334	21,811	16,049	23,369	8,332
St Ives PC	16,800	20,473	14,193	22,891	x
Truro and Falmouth PC	18,879	23,201	15,051	22,875	9,155

Source: ONS/NOMIS, Annual Survey of Hours and Earnings.

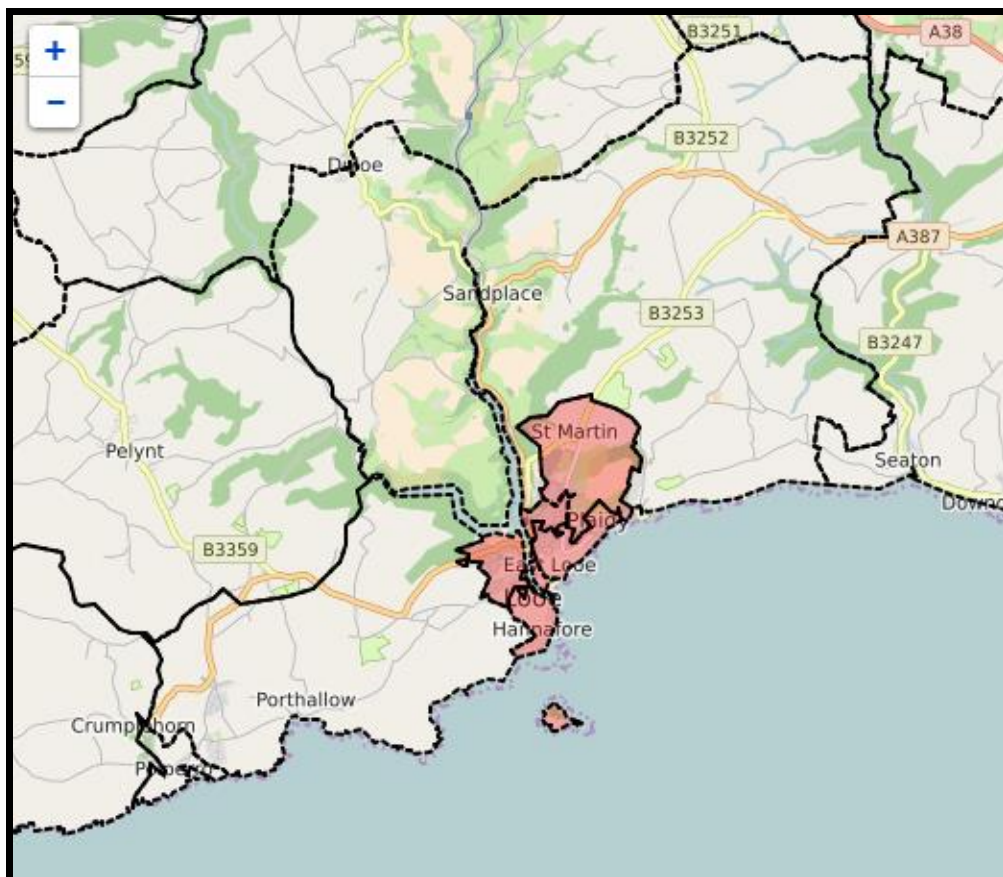
Resident earnings - annual %					
	All	Male	Female	Full-time	Part-time
United Kingdom	100.0	100.0	100.0	100.0	100.0
England	101.0	101.0	100.2	100.8	99.5
South West	94.6	95.9	91.8	95.9	98.4
Cornwall UA	82.5	82.1	85.8	84.4	98.7
Camborne and Redruth PC	81.0	82.8	75.4	82.6	109.1
North Cornwall PC	na	81.9	na	na	107.9
South East Cornwall PC	84.4	81.3	95.0	86.8	99.4
St Austell and Newquay PC	86.0	78.6	91.9	84.5	89.8
St Ives PC	74.7	73.8	81.3	82.8	na
Truro and Falmouth PC	84.0	83.7	86.2	82.7	98.7

Source: ONS/NOMIS, Annual Survey of Hours and Earnings.

D Notes and sources

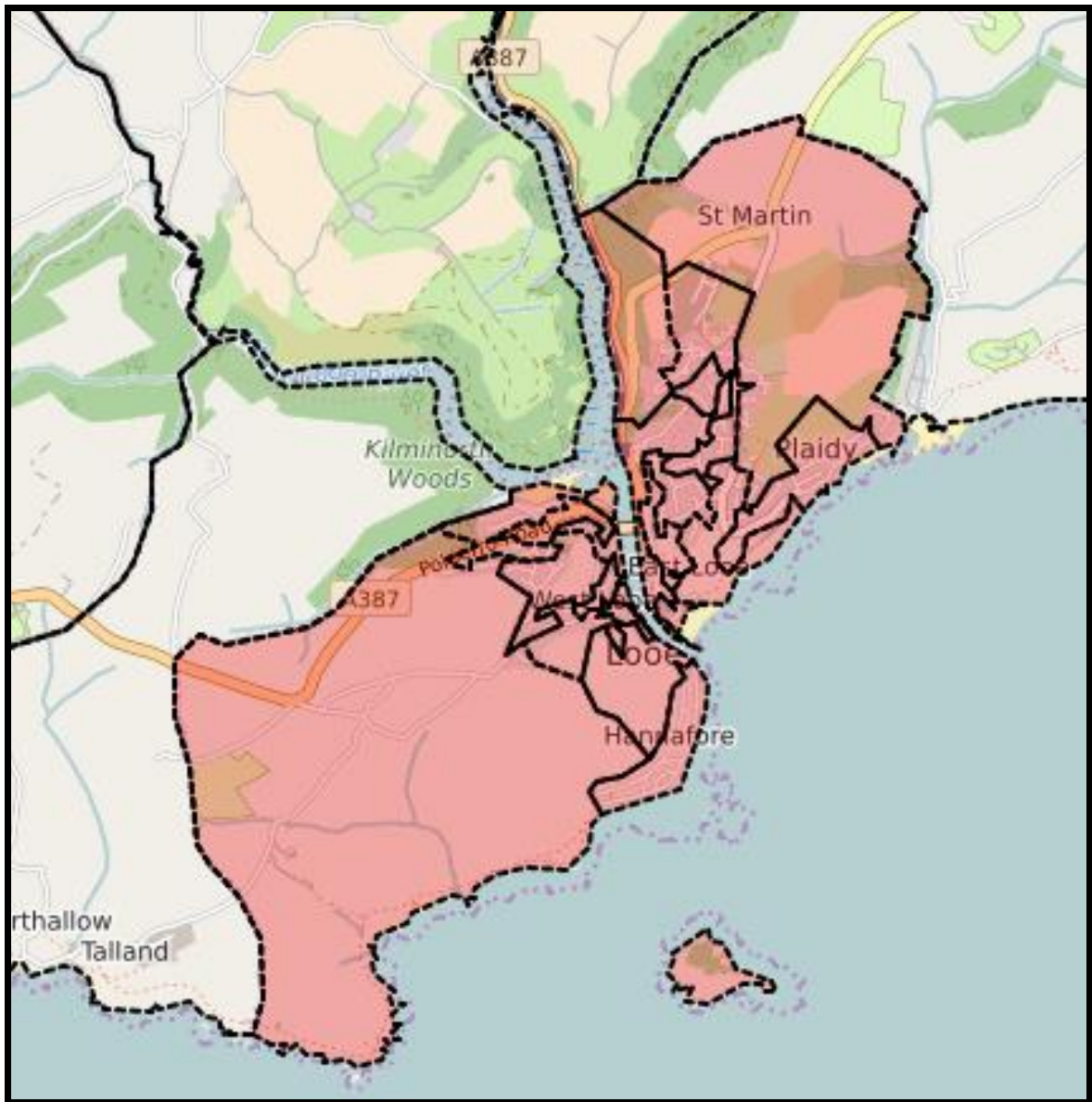
24. Maps -detailed

Looe – workplace zones



Source: NOMIS.

Looe – Output areas



Source: NOMIS.

25. Sources

Data	Source	Site
Businesses	UK Business Counts	NOMIS/ONS
Commuting	Census 2011	NOMIS/ONS
Dwellings and household spaces	Census 2011	NOMIS/ONS
Earnings	Annual Survey of Hours and Earnings	NOMIS/ONS
Economic activity	Census 2011	NOMIS/ONS
Employment (Residents)	Census 2011	NOMIS/ONS
Employment (Workplace)	Census 2011	NOMIS/ONS
Employment (Workplace)	Business Register and Employment Register	NOMIS/ONS
Hours worked	Census 2011	NOMIS/ONS
Jobseekers Allowance	Jobseekers	NOMIS/DWP
Population	Census 2011	NOMIS/ONS
Qualifications (Workforce)	Census 2011	NOMIS/ONS
Qualifications (Residents)	Census 2011	NOMIS/ONS
Travel to work - distance	Census 2011	NOMIS/ONS
Travel to work - mode	Census 2011	NOMIS/ONS

Prepared by:

Economic Development and Culture

30 September 2016.

If you would like this information
in another format please contact:

Cornwall Council

Level 5, Zone A,

Pydar House,

Pydar Street,

Truro,

TR1 1XU.

Telephone: **0300 1234 100**

Email: **enquiries@cornwall.gov.uk**

www.cornwall.gov.uk